

## Change Mode for your Spectrum DX6i Radio From MODE 2 to MODE 1

### Disclaimer:

Before you begin, please keep in mind that any of this modification probably invalidate your warranty, any damage caused to your Tx following these instructions is your responsibility, all steps are reversible but you can not guarantee that you wont loose a screw or break some tiny plastic part, so be very carefull.

### Change the software.

To enter the hidden menu:



Just go to the COPY/RESET menu inside the SETUP LIST.



Choose RESET. (DRAGONUS is the name i have assigned to my model 1 in the Tx memory)



When you are asked yes / no highlight the "list" button in the top right.





After this switch the AIL D/R switch at the top right from position 1 to 0 two or three times..



after this procedure the sender should open the menu to change mode.



Choose your mode with the dial and push the dial to accept.

Change the spring from the right stick to te left.

Tools you will need:





I reccomend you use your styrofoam packaging to protect your transmitter from scratches.

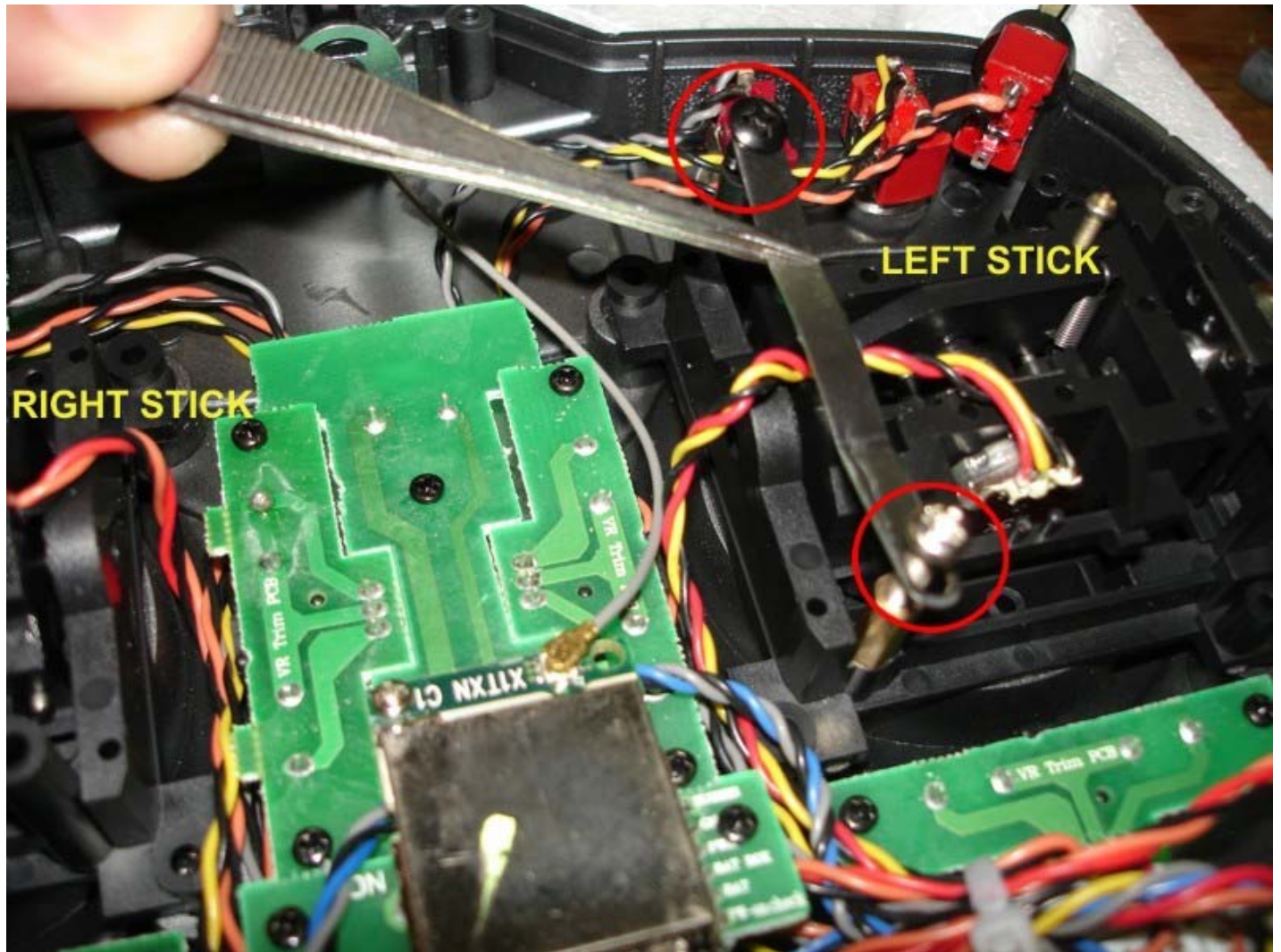


- 1.- Remove the 4 "AA" batteries from the batteries compartement.
- 2.- Remove the back part of the transmitter case, unscrewing the 6 phillips head screws.



- 3.- Before you remove this 3 connectors that connect both parts, mark with a "sharpie" pen, to reconnect them as they need to be.



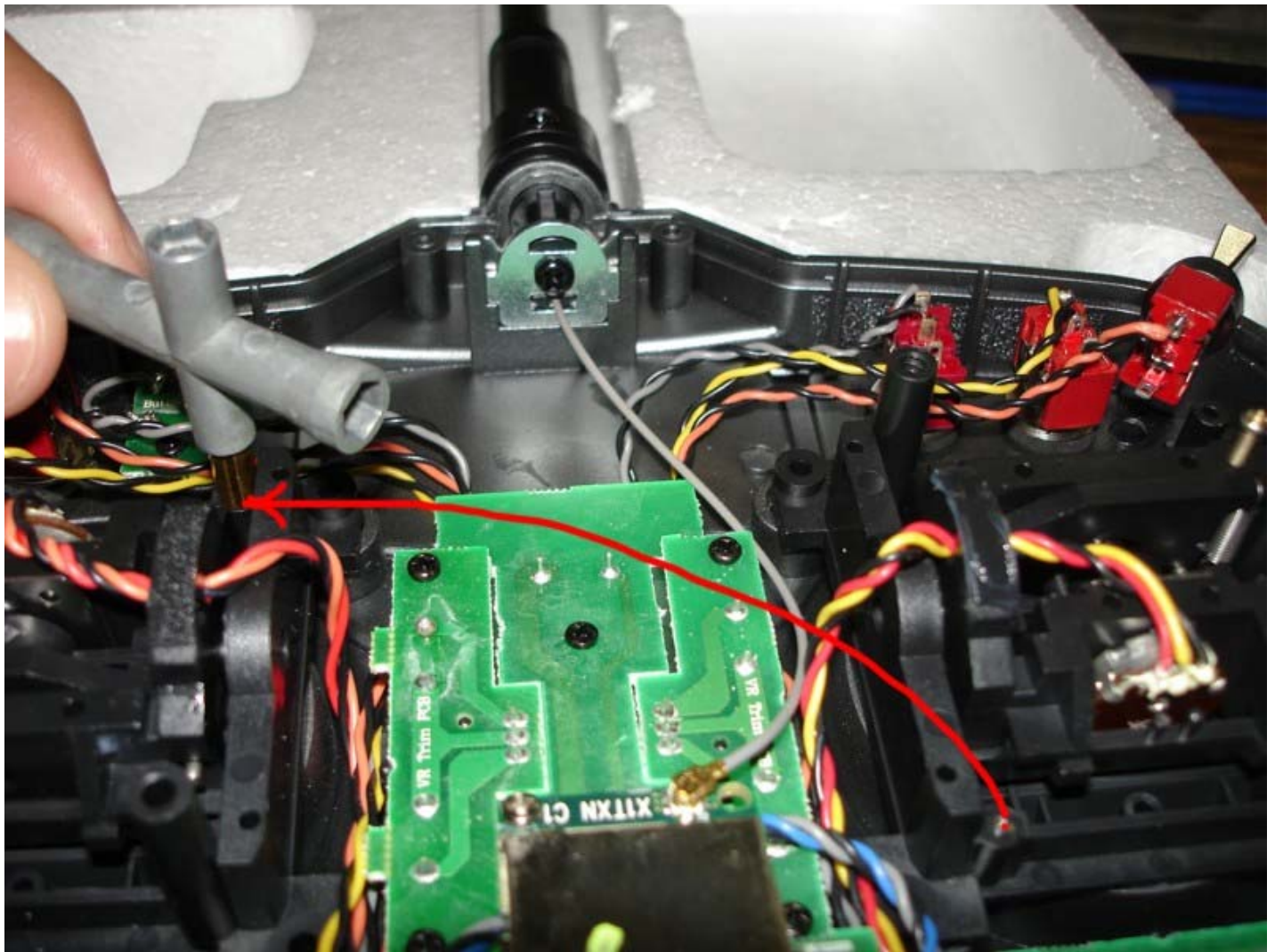


4.- Untight this 2 screws and remove the friction plate.



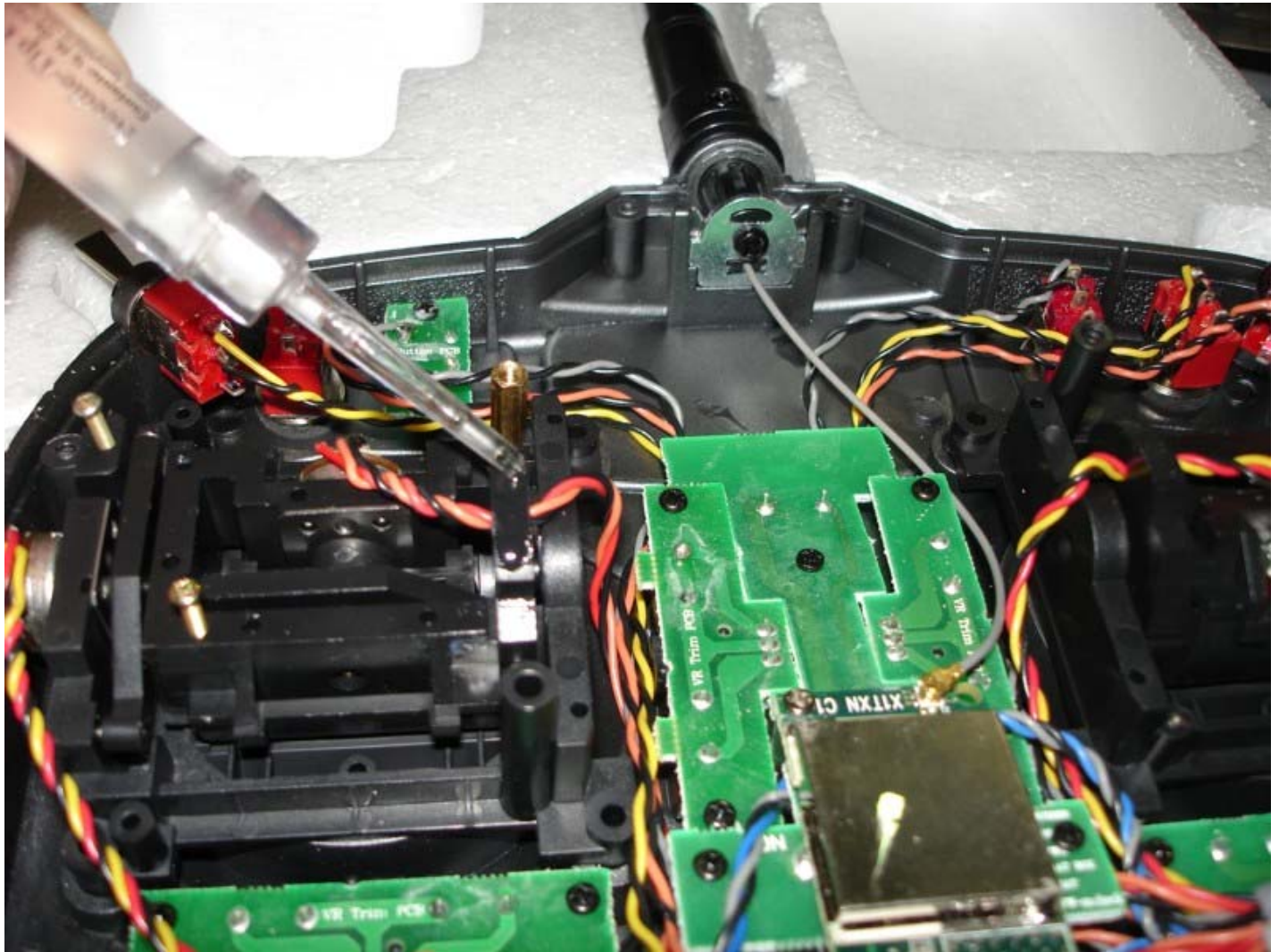
5.- I used my RC wrench to remove this nut (4mm hex)



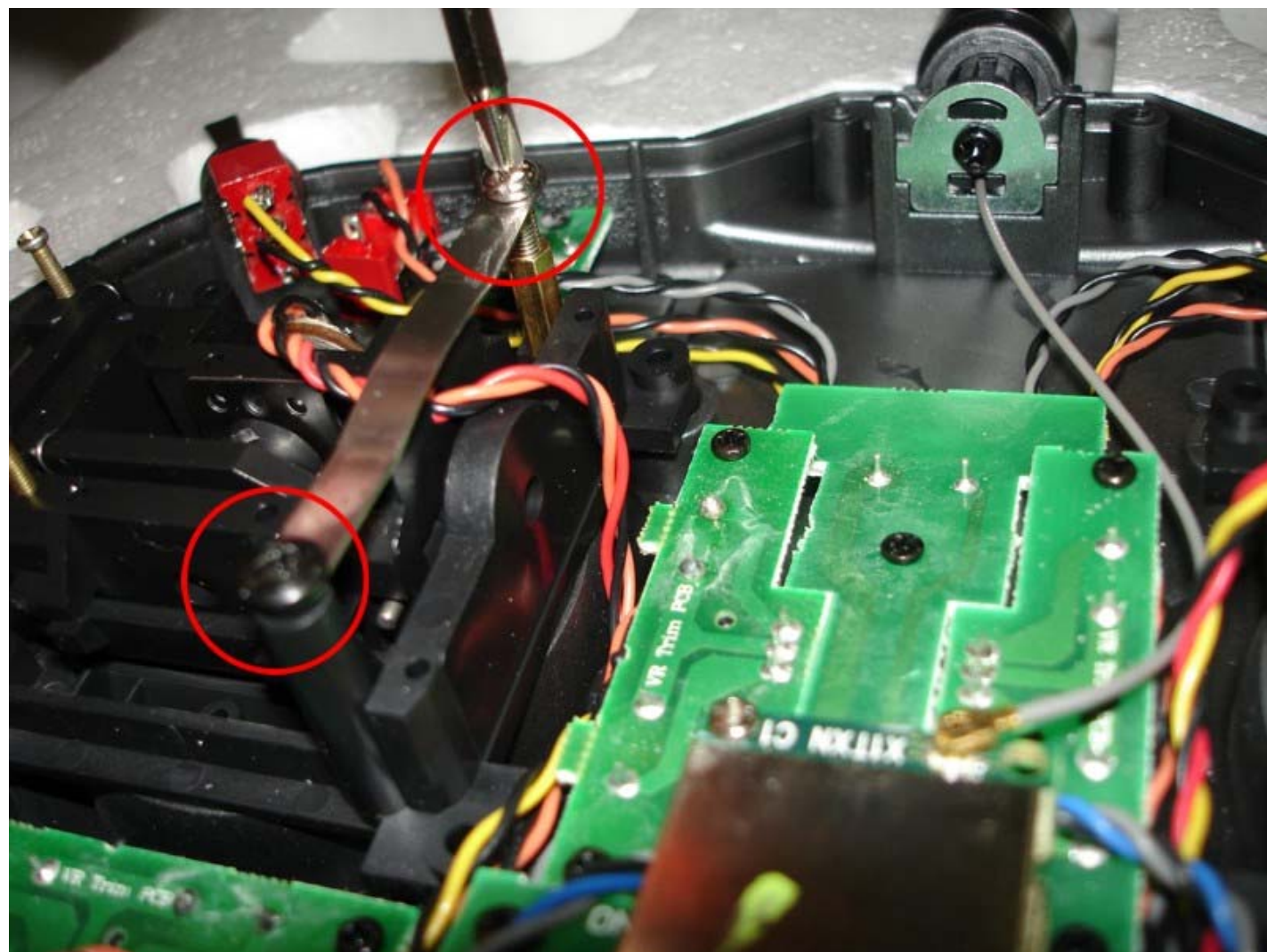


6.-Screw into the new position (some people doesn't use this friction plate so steps 5 thru 8 can be omitted).





7.- Use silicon oil to lube the plastic were the friction plate makes contact.



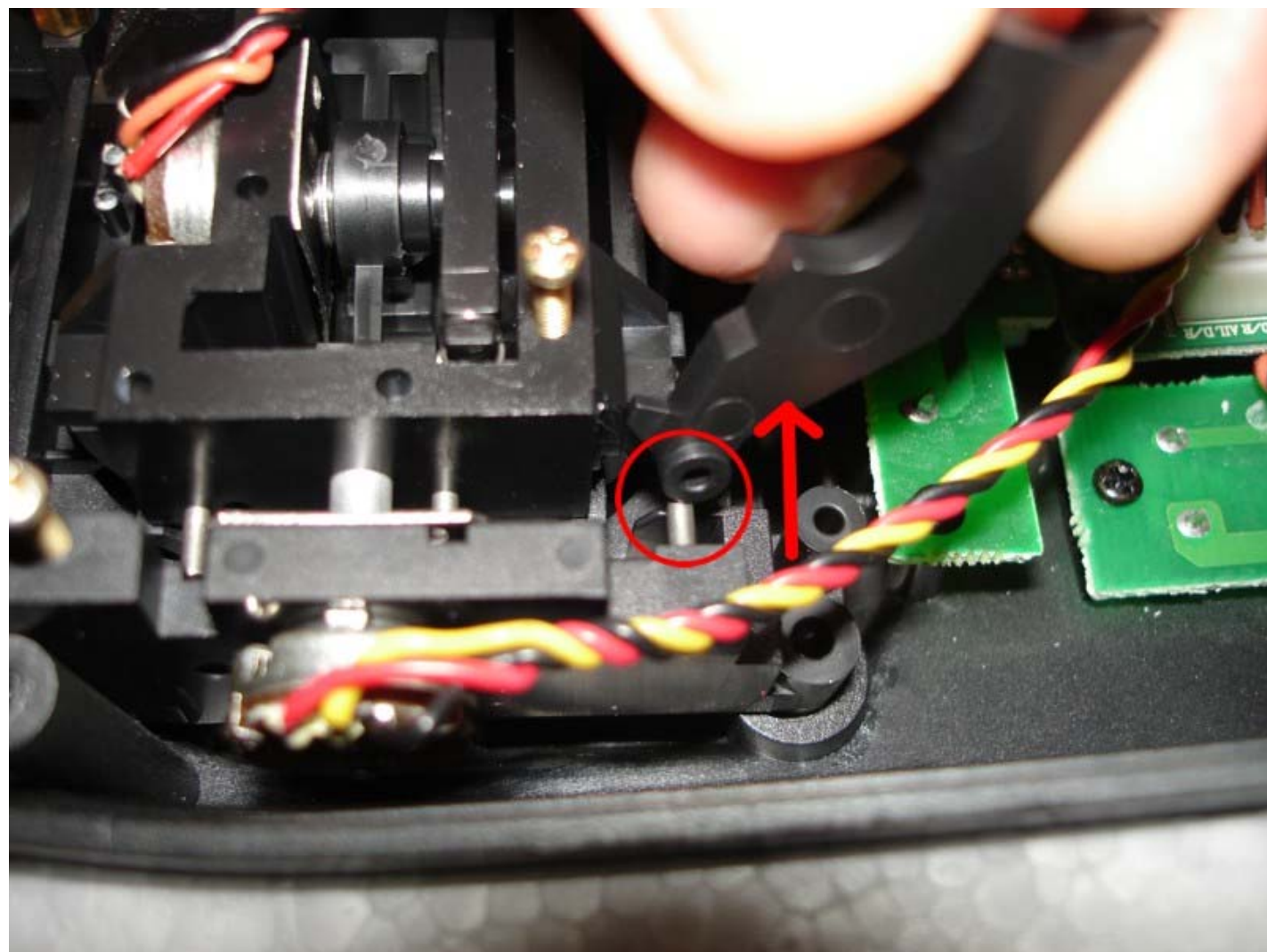
8.- Screw the friction plate as the picture shows, black screw goes almost all the way and the silver screw is to adjust the friction feel that you like the most, move the throttle stick and adjust as desired.



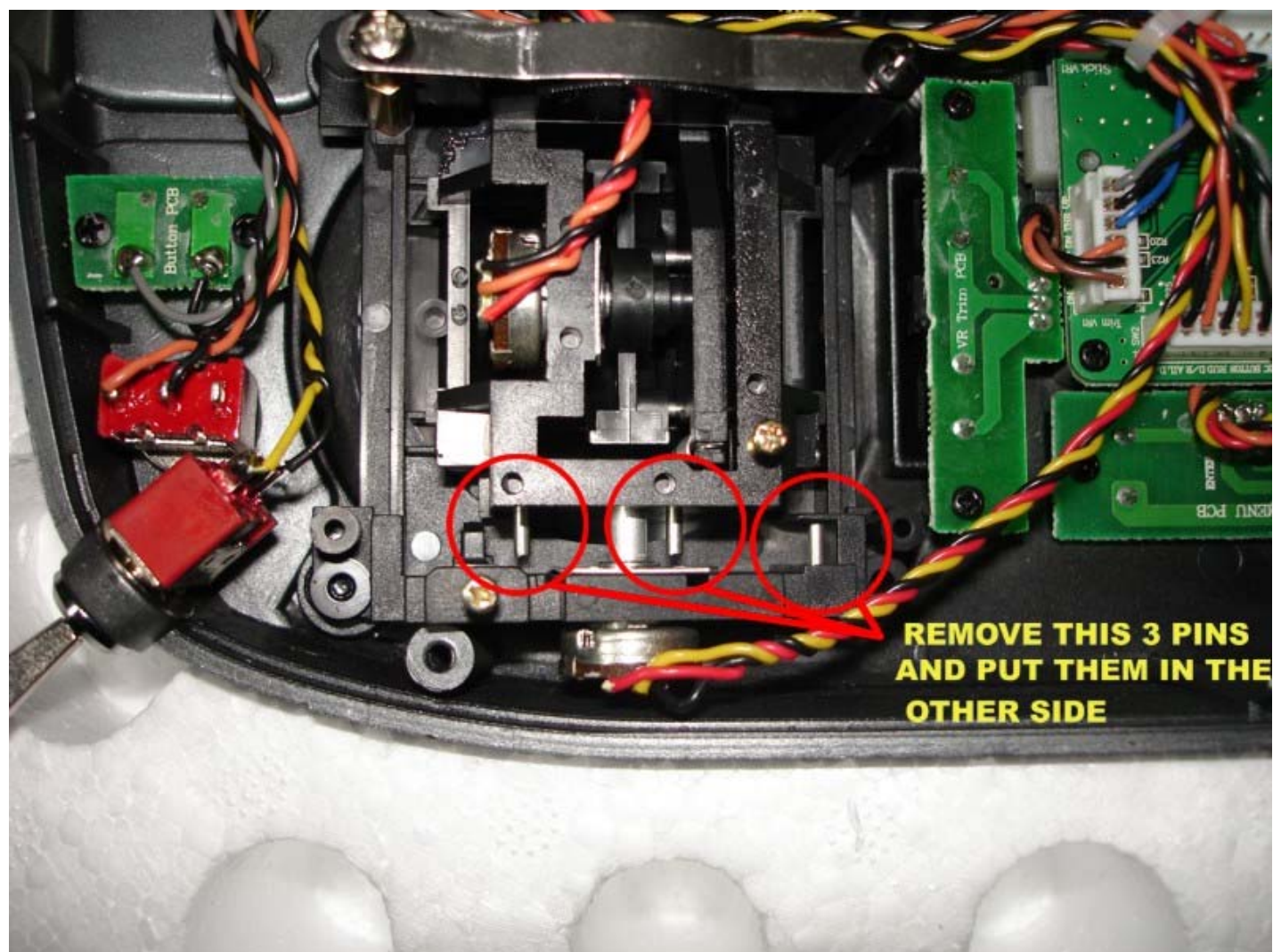


9.- Remove the right stick spring (be carefull not to loose it or bent it).



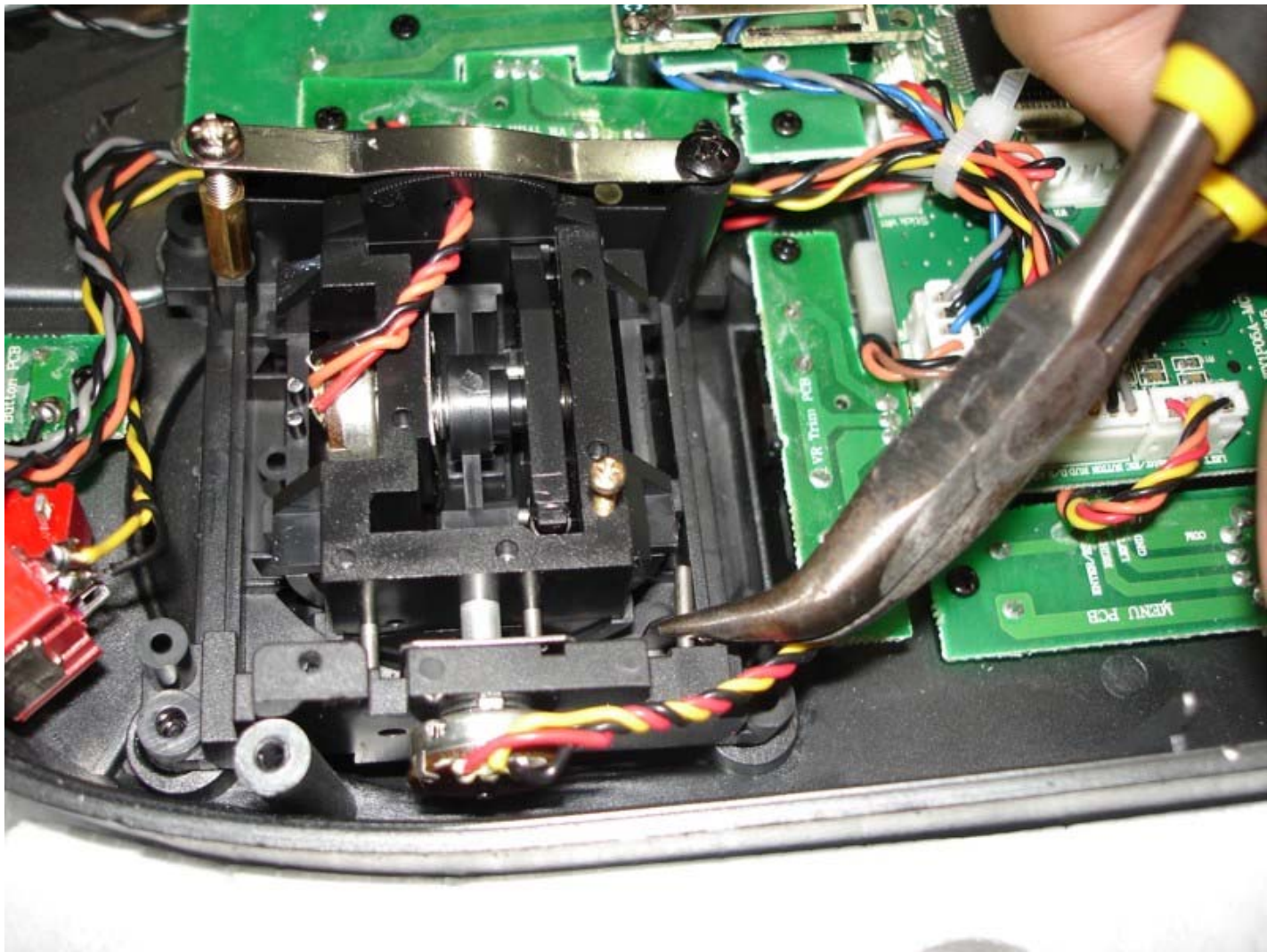


10.- Remove this plastic part.



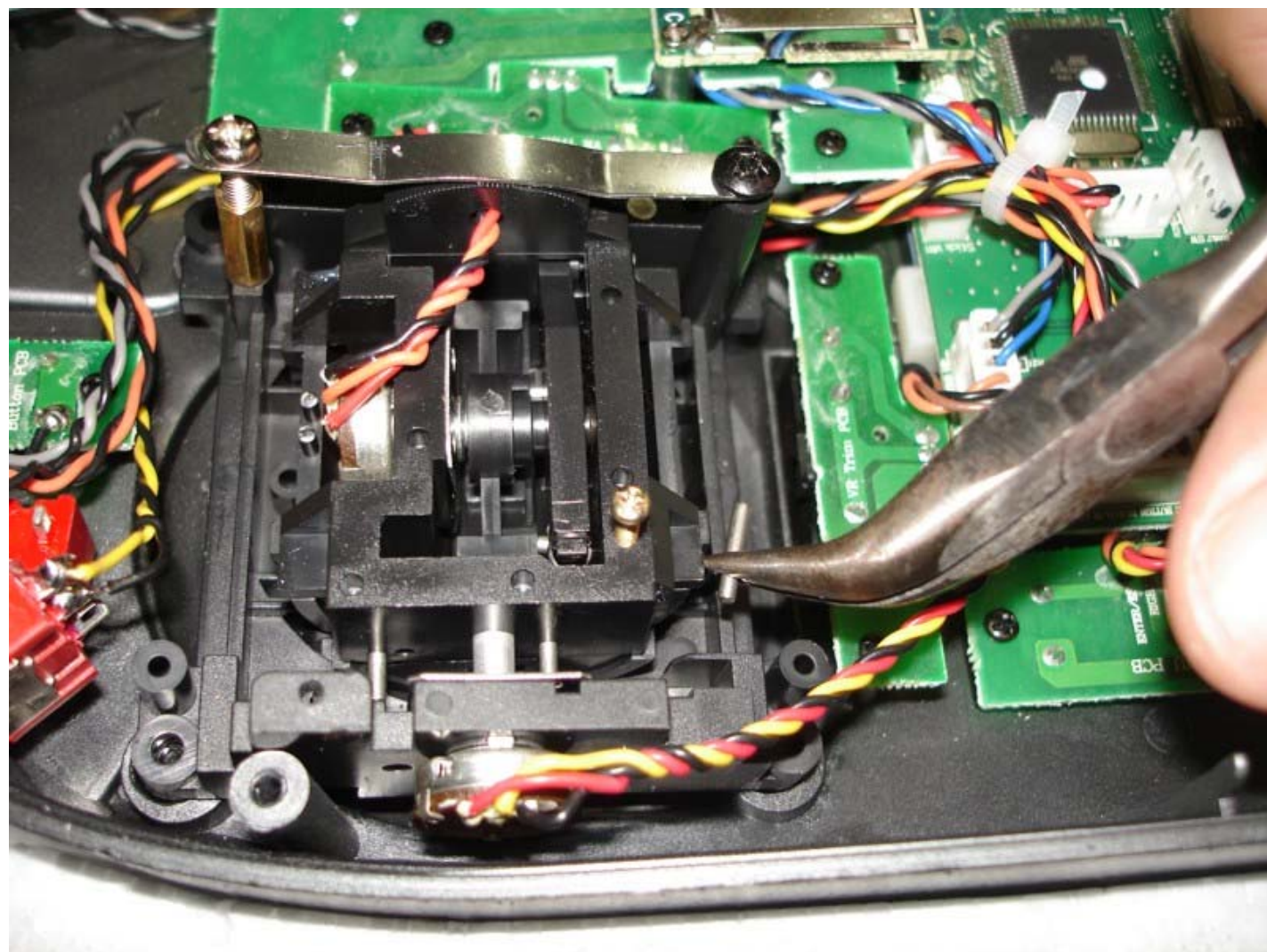
11.- This 3 pins needs to be removed from Right Stick to be put in the Left Stick.



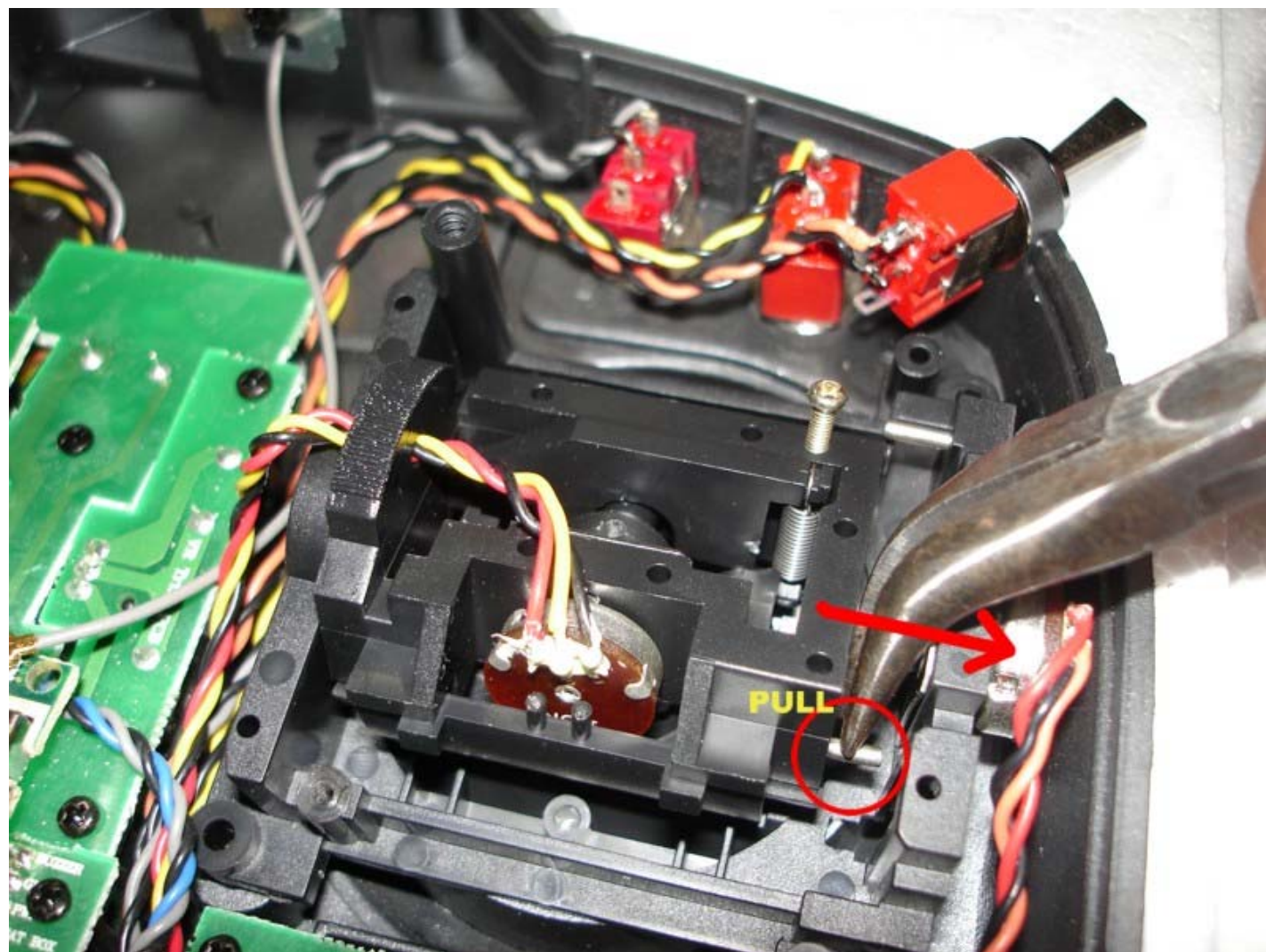


12.- Use a bent nose pliers like the picture and be very carefull since there is very little space.





13.- Remove one by one and place in the other stick, the position is the same but remember that the stick is rotated 180°.



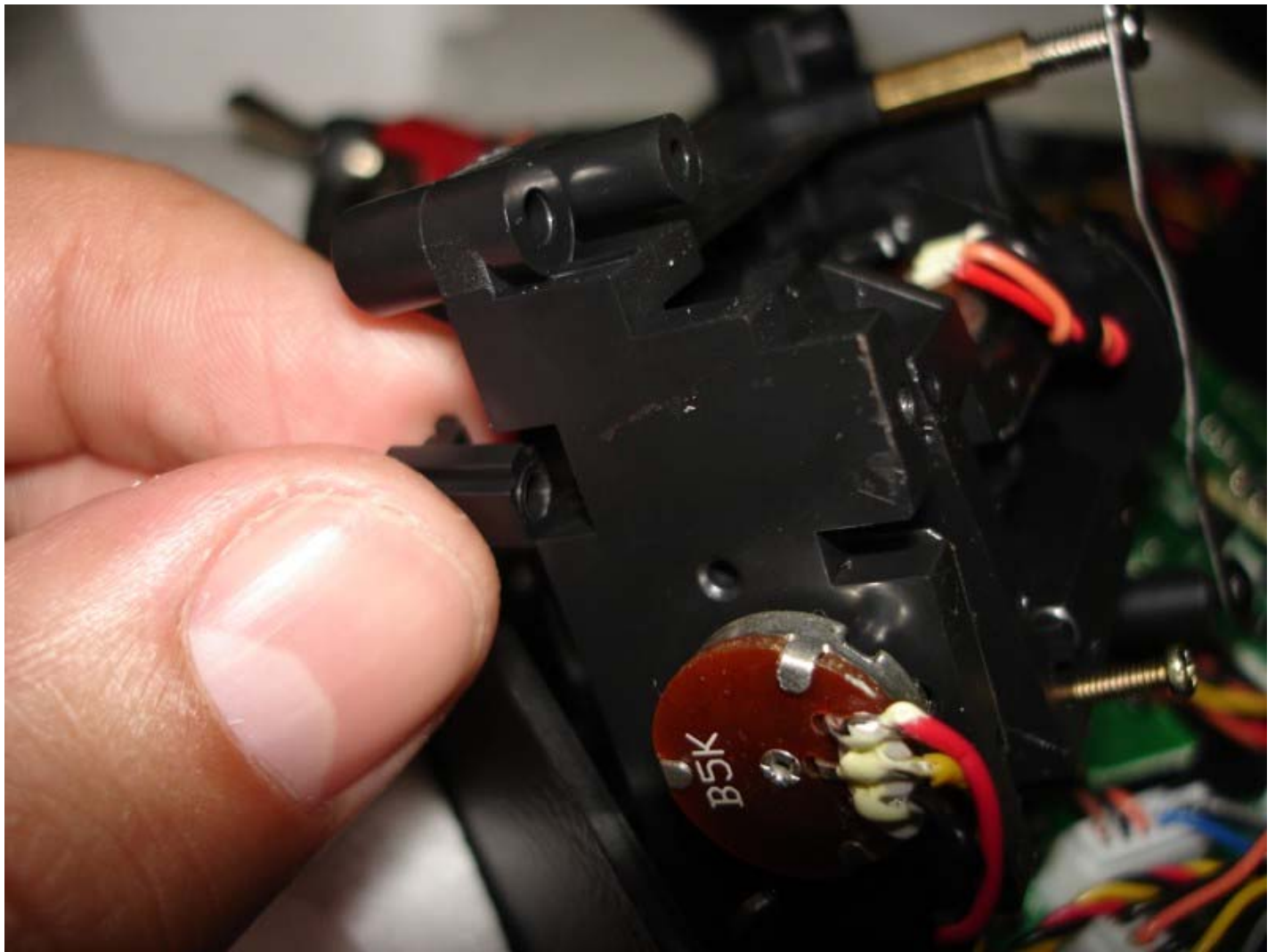
14.- Twist a little first to make it easy to pull out.





15.- Use a 2mm hex screw remover to remove the right stick from the front half case, this are just 4 screws.





16.- Remove the little plastic part that keeps the spring tensioner in position, you need to use a small screwdriver to help to push it out from the inside, reassemble the right stick and make this same steps 15 and 16 to put in the left stick.



17.- Reattach the spring into position, put the tension adjusting screw into position and adjust the same tension as the horizontal stick.



18.- OK now you have a new MODE 1 Brand New Transmitter.

**CREDITS:**

**Software Procedure:**

**Hardware Procedure, Pictures and Text:**

**Max3Design**